

CONSULTANT:

David Yung

Digitally signed by

David Yung

Date: 2024.06.11

17:01:48 -0400

1726 E ATLANTIC BLVD  
POMPANO BEACH, FL 33060220 MAIN ST  
GAINESVILLE, FL 32601

PROJECT NUMBER: CLR2023-03

ATLANTIC ONE

CLIENT:

THE COLLIER COMPANIES

DRAWING RELEASE

DATE

DRC

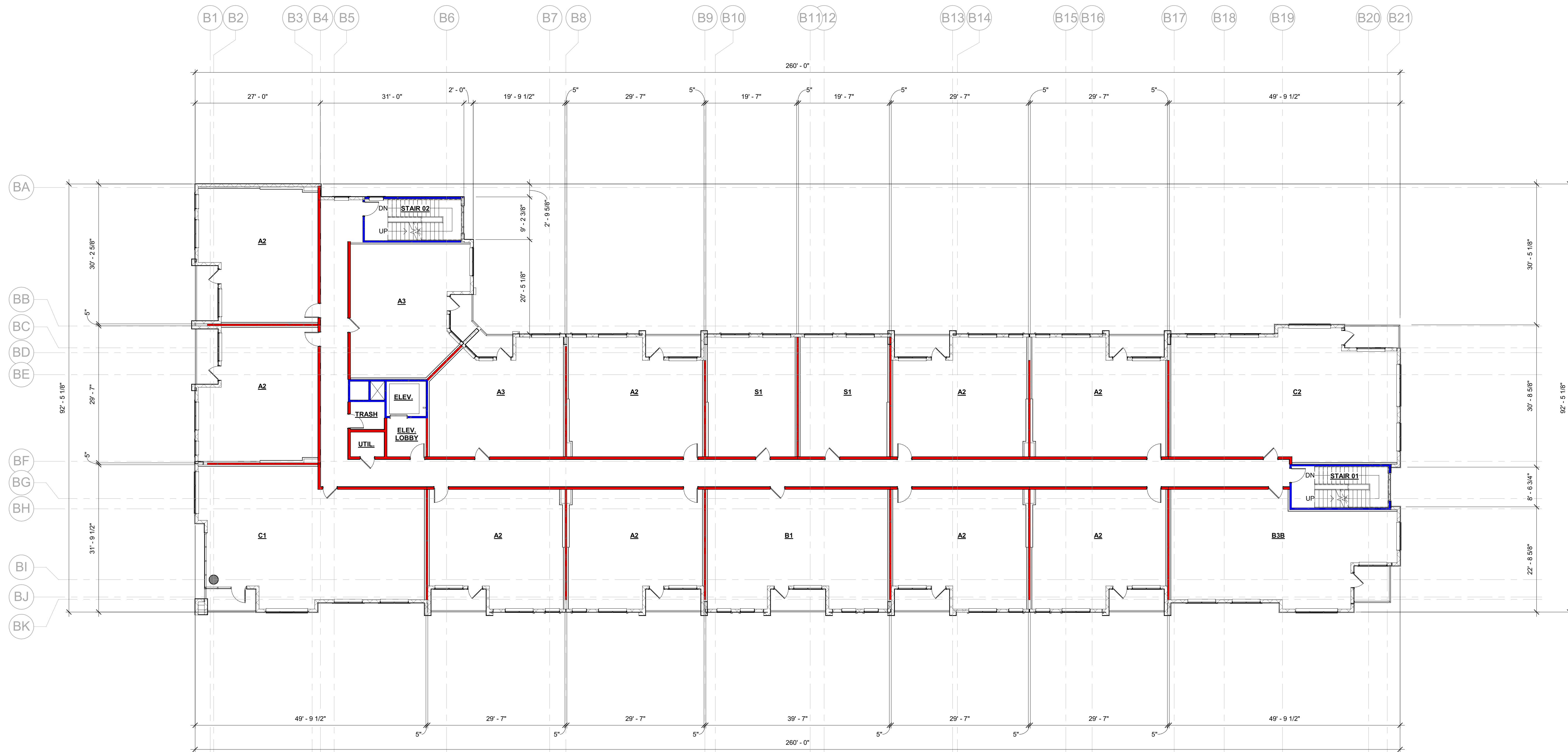
06/11/2024

TITLE:

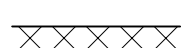
BUILDING 2000 -  
LEVEL 02-05

SHEET NUMBER:

A1-22

4  
A4-212  
A4-213  
A4-211  
A4-21

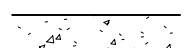
## LEGEND



CMU WALL



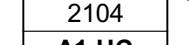
CAST-IN-PLACE CONCRETE WALL



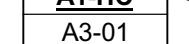
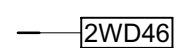
PRECAST CONCRETE WALL



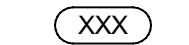
ROOM NUMBER



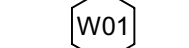
RESIDENTIAL UNIT DESIGNATION

LOCATION OF ENLARGED UNIT PLANS, RCP,  
AND INTERIOR ELEVATION REFERENCES

WALL PARTITION



DOOR CALLOUT



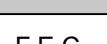
WINDOW TYPE CALLOUT



STOREFRONT TYPE CALLOUT



FIRE EXTINGUISHER CABINET - SURFACE-MOUNT



FIRE EXTINGUISHER CABINET - SEMI-RECESSED



FIRE EXTINGUISHER CABINET - RECESSED



1-HOUR RATING



2-HOUR RATING

## GENERAL NOTES

- REFER TO A3 SERIES FOR ENLARGED RESIDENTIAL UNIT PLANS, INTERIOR DOOR TYPES AND LOCATIONS, RESIDENTIAL UNIT RCPs, FINISH FLOOR PLAN, AND FHA PLAN.
- REFER TO SHEET CD SERIES FOR WALL AND FLOOR/CEILING ASSEMBLY TYPES AND ADDITIONAL INFORMATION.
- REFER TO A8 SERIES FOR DOOR SCHEDULES, LEGENDS, AND DETAILS.
- ALL SLOPES TO BE 1/4" U.O.N.
- REFER TO INTERIOR DRAWINGS FOR AMENITY LIGHTING AND FINISH SPECIFICATIONS.
- REFER TO INTERIOR DESIGN DRAWINGS FOR CONDITIONED CORRIDOR FINISHES. CONTROL JOINTS IN CORRIDOR CEILING TO BE 30'-0" O.C. MAX. PROVIDE JOINTS BEGINNING AT CORRIDOR INTERSECTIONS UNLESS NOTED OTHERWISE.
- DOOR LOCATIONS NOT DIMENSIONED SHALL BE LOCATED AT MIDPOINT OF WALL OR 4" CLEAR FROM ADJACENT WALL CORNER TO HINGE SIDE, TYPICAL.

## KEY PLAN

